

OR-C200

工业用扫地机 Industrial Sweeper

OR-C200系列扫地机主要用于工矿、企业、大型仓库、大专院校、高档别墅及其他良好地面环境的场所。

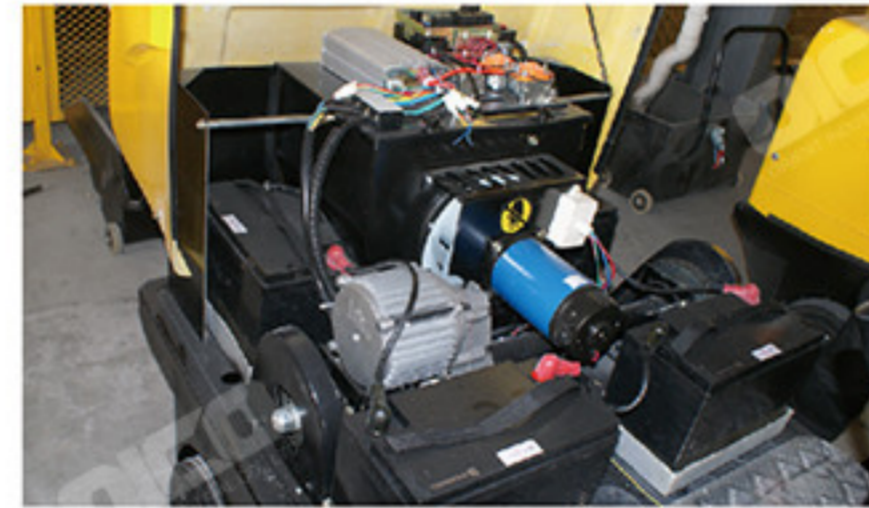
颜色可定做 / 标配色：黄色 ●

Model OR-C200 sweeper mainly used for ore yard, enterprise, large warehouse, high grade villa area and other places which has a flat ground and fine environment.

Color can be customized / Making color : Yellow ●

性能特性

- 双边刷设计，宽1250mm，小巧灵活，通过性好。
- 使用先进的高性能免维护铅酸电池，无泄漏，无有害气体。
- 手动调节刷把的升降，机械化操作，故障率低。
- 充满电后，可连续工作4-6h，速度为0-5km/h。
- 夜间操作配有前置照明灯。
- 后置警示灯装置使夜间工作更安全。扫地机的所有配件都可以轻松地拆卸和安装。



CHARACTERISTICS:

- Double-brush, sweeping width of 1250mm. Small and flexible.
- Use of advanced high-performance maintenance-free batteries, no leakage, and no harmful gases.
- Adjust the brush up and down manually, operated by machine with low accident.
- Continuous working time of 4-6 hours after full charge, speed of 0-5 km/h.
- Pre-lighting for night operations.
- With warning light you can drive safely. All parts of the sweeper can be removed and installed easily.



序号 S/N	项目名称/Item NO.	单位/Unit	参数/Specification
1	清扫宽度 Sweeping paths	mm	>1300
2	工作效率 Productivity	m ² /h	>7000
3	爬坡能力 Max climbing capacity	%	20
4	主刷长度 Main brush's length	mm	700
5	动力源 Power supply	v	48
6	连续工作时间 Continuous working time	h	4-6
7	垃圾箱容量 Waste hopper capacity	L	130
8	边刷直径 Side brush's diameter	mm	500
9	驱动功率(电机) Driving power	w	1200
10	作业功率(电机) 主刷+风机+边刷+吸尘 Working power (motor) Main brush+fan+side brush+vibration	w	600+400+80*2+50
11	转弯半径 Turn radius	mm	1000 (原地转弯/spot turn)
12	尺寸 Dimensions (L*W*H)	mm	1.6*1.3*1.4
13	最大工作速度 Working speed	km/h	6
14	最大行驶速度 Driving speed	km/h	8
15	过滤面积 Filter surface	m ²	5
16	净重 Net weight	kg	460

